

4-H Focus

MAY 2024



More than a Fair Entry

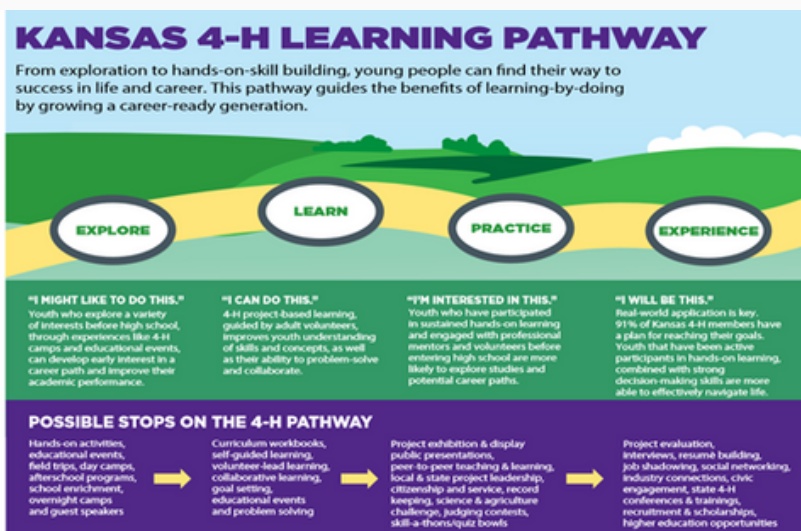
As fair season is fast approaching, it is important to remember to look beyond the blue and purple ribbons or the trophies and remember why we do what we do in 4-H.

4-H project-based learning provides a place for youth to explore their interests and passions — or what we like to call their sparks! Youth learn from caring adult volunteers, or in some cases through self-guided study, in projects in areas such as science, health, agriculture, and citizenship. Screened adult volunteers provide a safe and positive environment where youth learn by doing. Young people thrive through 4-H participation, finding their way to success in life and career.

Careful consideration should be used when selecting a 4-H project to enroll in for the year. A 4-H project has five components: Learning Experiences, Leadership, Citizenship, Exhibition, and Record Keeping. An explanation of each component can be found below. These five components can all be found along the Kansas 4-H Learning Pathway (4H1131).

Leavenworth County
711 Marshall St.
Suite 101
Leavenworth, KS 66048

913-364-5700
leavenworth.ksu.edu



K-STATE
Research and Extension

ksre.k-state.edu

K-State Research and Extension is an equal opportunity provider and employer.

Small Animal Tagging & Worksheet Deadline - Sunday, May 5th

Small Animal Tagging is Sunday, May 5th at the Leavenworth County Fairgrounds. You should have received your worksheets for all animals and an email with the link to the tagging sign-up. If you have not received either one of these, please contact the Extension Office ASAP. Reminder: ALL worksheets are due on May 5th. You can scan and email, take a picture and email or text, mail (not recommended), drop it by the office or bring all your worksheets to tagging on Sunday. NO worksheets will be accepted after Sunday, May 5th. Do not wait if you have questions.

ATTENTION
LIVESTOCK
EXHIBITORS

Youth for the Quality Care of Animals (YQCA) Annual Training

All youth who are planning to exhibit livestock at the Leavenworth County Fair must take the annual Youth for the Quality Care of Animals (YQCA) certification class. You can either take the class online at yqcaprogram.org or attend a in-person class. All in-person classes in Leavenworth County have been offered this year but you can still take in-person classes in surrounding areas/counties.

If you have already taken the class, please remember to log back in to your YQCA account and print your certificate. You will need to take a pre and post class survey in order to gain access to your YQCA certificate.

If you attended one of the two in-person classes that we offered, we do not need your certificate, just your number on your family identification worksheets that are due May 5th. If you took the class elsewhere or online, please submit a copy of your certificate to the office.

Deadline to complete YQCA training to exhibit livestock at the 2024 Leavenworth County Fair is June 30th.

FairEntry Opens June 1, 2024



You Must Enter Your Projects in FairEntry to be eligible to bring them to fair under 4-H.

Registration is June 1 through June 30, 2024. You will access the FairEntry program through our website, leavenworth.ksu.edu. The system works with your 4-H Online Enrollment information. You will use your family account email and password to log in to FairEntry. *It is important to remember that only the projects that you enrolled in through 4honline will be available for fair entries.*

IMPORTANT: Complete entries for ALL 4-H members in your family BEFORE selecting the submit button. Entries may be adjusted in the account before the submit button is selected until June 30, but become final when the submit button is selected. There will be no changes made after June 30.

There is a \$4.00 fee per exhibitor, which now can be paid online!

If you have any questions, please access the 4-H FairEntry Guide located on our website. Within the guide is a step by step tutorial with written instructions and screenshots of examples of pages you will see when registering.

As a reminder if you filled out and turned in a Livestock Identification worksheet, this does not count as your entry for fair. You still need to enter the animals you are bringing to fair into the FairEntry System.

If you need further assistance or access to a computer come into the Extension Office or give us a call at 913-364-5700.

Quarterly Cloverbud Meeting

Kansas State Research and Extension and 4-H Youth Development offers an educational program specifically designed for youth ages 5 and 6 called Cloverbuds. Children of this age have distinctive learning characteristics and developmental needs that are different from older youth who participate in 4-H. That is why the 4-H Cloverbuds program is designed with specific educational objectives and policies focused to benefit 5- and 6-year-old children.

4-H Cloverbuds may not participate in any competitive 4-H events, but they may showcase their exhibits at county fair and public events. 4-H Cloverbuds are allowed to showcase a pet from the approved list in accordance with 4-H Cloverbuds pet policies. 4-H Cloverbuds may not own and/or show **4-H** livestock.

Most of our community clubs in Leavenworth County have youth this age who are enrolled members of that club. Some clubs have separate activities for Cloverbud youth while others have them engage during their regular monthly meetings. Leavenworth County 4-H also offers a countywide Cloverbud meeting every quarter.

The next Countywide Cloverbud meeting will be hosted by Bell 4-H Club and held on May 12th. Contact the Extension Office for more information or to RSVP.

Photo Boards

Before we know it, it will be time to purchase photo boards for all those beautiful photos your 4-Her has been taking. Price for photo boards will increase this year. The price for each board will move to \$1.25. Just a reminder, the Extension Office does not make money on these boards. We simply pass the cost on. Boards are available anytime at the Extension Office.

Kansas Junior Livestock and State Fair Nomination Reminder

Families planning to participate in the Kansas State Fair Grand Drive or the Kansas Junior Livestock Show should read this information.

You must order the DNA envelopes online!

The Rookie Guide will be helpful to everyone who is going through the process. It can be found on the Youth Livestock webpage at <https://www.asi.k-state.edu/research-and-extension/youth-programs/>

There is also a video located on the Youth Livestock page that can be very helpful.

Finally, it is a requirement for 4-H members to be enrolled and the enrollment fee must be paid in order to participate.

Nominations are due for small livestock and Commercial Heifers on June 15th.



Record Books

Why do we need to learn 4-H Record Keeping? The purpose of 4-H record keeping is to teach how to keep records, which is an important life skill. Record keeping is an ongoing process that does not end when the 4-H year ends. Youth are encouraged to select from a variety of alternatives to meet their individual record keeping needs and learning styles.

In 4-H, using a record keeping system is a recommended practice for youth in grades 4-12 to track participation, goals, achievements, and reflections throughout your 4-H journey. This record keeping system can be referred to when writing award applications, resumes, scholarship applications, or preparing for meetings or speeches. You can find more information on our local website under 4-H Youth Development/Forms and Resources.

Objectives for 4-H Record Keeping

- To learn how to set goals, how to make plans for action, and how to decide how well you did (evaluation).
- To learn the skills of record keeping and organization to use now and in the future.
- To learn to communicate and summarize.
- To learn responsibility by completing a task.
- To evaluate information that will market personal skills through future resumes and application forms.

Leavenworth County 4-H Council Food Stand

Leavenworth County 4-H Council runs the 4-H Food Stand at County Fair each year. It is councils one and only fundraiser that helps pay for ribbons, events and scholarships. Each 4-Her is expected to help out.

County Council has been busy making some updates to the stand. New LED lights were installed as well as the Food Stand Pavilion got a facelift. It was sandblasted, repainted, concrete was resealed and a replacement sign was ordered. This work was done through money received from the Leighty Grant as well as generous donations from 4-H clubs. The stand is aging and updating will continue to be needed.

4-H clubs will be expected to take two shifts, one day shift and one night shift. Club shifts will be determined by lottery system. What does this mean? You need to have a club representative at the June 24th County Council Meeting to draw for your club spots. It is important that your club decide what shifts they would prefer. I would recommend ranking all club shifts from number one choice all the way to last choice. Because the order of clubs picking is completely random, this will help your representative select the best shifts for your club. County Council meets at 7pm at the Extension Office. The drawing for club shifts will take place first thing. If you do not have a club representative present, then your club will receive the remaining shifts available.



4-H Discovery Days

We would like to invite youth to K-State to develop college and career readiness skills which prepare participants academically and socially for a successful transition to college and life as an adult through our educational sessions during 2024 4-H Discovery Days. We have numerous campus partners that will be offering sessions. These sessions will open the door to possibilities for youth to learn new ideas, techniques, and skills they can use personally and in their 4-H clubs, groups, and communities. Youth will stay in the dorms, meet new friends from all over the state and make their way throughout campus to different classes and activities. Discovery Days will be held June 5th - 7th and is open to youth 4-H age 13-18. Registration closes May 5th. Registration Link: https://kstate.qualtrics.com/jfe/form/SV_cYEpubOXOdhYFWm

Leavenworth County 4-H Camp Out

Youth Leaders will be hosting an overnight camp at the Leavenworth County Fairgrounds. This will replace the traditional Leadership Day Camp that Youth Leaders have hosted. The camp will take place June 3rd and 4th. The camp is open to 4-hers 7-12 years of age (4-H age). The cost of the overnight camp is \$25. During camp, campers will have the opportunity to for some project learning, fun and games, enjoy a campfire, swim at the Tonganoxie pool and much more. Deadline to register is May 10th. Space is limited so don't wait. Registration link: https://kstate.qualtrics.com/jfe/form/SV_cNmHauFCJcRRnQa



2024 Senior Shout-Out

Congratulations to our 2024 4-H Seniors! Best wishes for your next adventure. May 4-H always hold a special place in your hearts. Please join me in congratulating our Seniors!

<p style="text-align: center;">BELL Mia Erzen Steven Highfill Emma Murphy Brookelin Pierce-Connel</p>	<p style="text-align: center;">HAPPY HELPERS Taylor Igleheart Jason Lasher Lucy Reike Timothy Jesse Schmid Gavin Shupe</p>
<p style="text-align: center;">BOLING Lorelei Crow Michael Miner</p>	<p style="text-align: center;">HAPPY HOLLOW Cooper Beying Mason Ewert Alice Mattox Logan Simpson Andrew Stewart</p>
<p style="text-align: center;">GLENWOOD Audrey Bracken Mary Habjan</p>	<p style="text-align: center;">LIVEWIRES Isaac Jenkins Virginia Parsons</p>
<p style="text-align: center;">GROWN RIGHT Ethan Langford Mya Lewis</p>	<p style="text-align: center;">STRANGER CREEK Lauren Mance Colby Wise</p>



Leavenworth County
711 Marshall St.
Suite 101
Leavenworth, KS 66048



K-State Research and Extension is committed to providing equal opportunity for participation in all programs, services and activities. Accommodations for persons with disabilities may be requested by contacting the event contact (Sonya Murphy) two weeks prior to the start of the even at (913-364-5700). Requests received after this date will be honored when it is feasible to do so.